



the Co-op Connection

DECEMBER 2017

NEWS AND INFORMATION FROM YOUR POWER PARTNER

*CFEC Wishes You A
Merry Christmas and
A Happy New Year*

Energy Efficiency and Conservation Tips



It is never too early or too late in the year to start preparing your home with energy efficiency initiatives that will result in greater comfort and cost savings. Central Florida Electric Cooperative has provided several energy efficiency suggestions below. When implemented correctly, these items will save you money throughout the year.

• **Check windows and doors for leaks.** Caulking, weather stripping, and insulation help seal gaps and keep designated air in your home. Uncontrolled air leaks can add 10 percent to 20 percent on annual heating and cooling bills.

• **Maintain your HVAC/Heat Pump unit.** Routine maintenance insures that you will be warm in the winter and cool in the summer while keeping your energy bills affordable. Remember, to replace your HVAC/HP filter every six weeks for optimal performance. Additionally, if you can set your thermostat between 68-70 degrees in the winter and 78-80 degrees in the summer, for eight hours a day, you can save up to 10 percent annually on your heating and cooling bills.

• **Check the over and under of your home.**

One of your best bets for savings money and energy is to inspect your ductwork to make sure it is sound. Collapsed connections, tears, animal damage, and gaps can leak conditioned air into unused spaces.

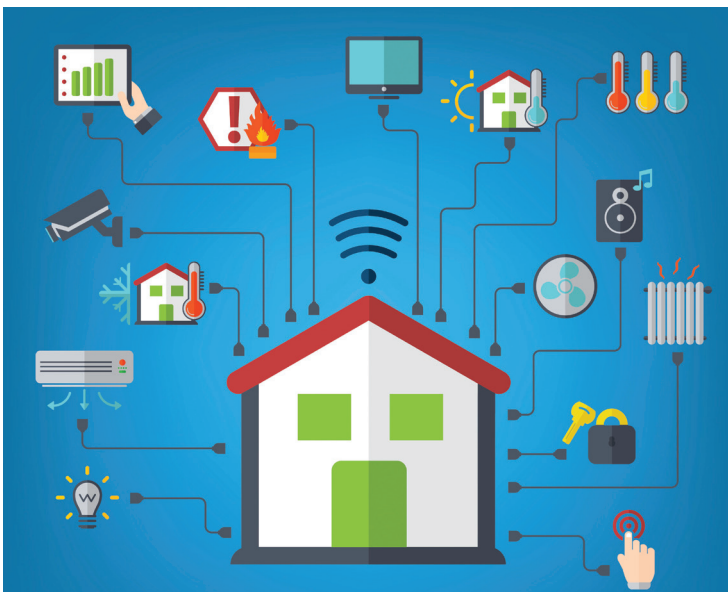
• **Save money with LEDs.** Replace your home's five most frequently used light fixtures or bulbs with LEDs that have earned an Energy Star rating. ENERGY STAR-qualified LEDs use only 20 to 25 percent of the energy and last up to 25 times longer than the traditional incandescent bulbs they replace. LEDs use 25 to 30 percent of the energy and last 8 to 25 times longer than halogen incandescent bulbs. By replacing older, inefficient bulbs, you will save money in the winter and keep your home cooler in the summer.

• **Replace old appliances with Energy Star-rated appliances.**

Do you ever wonder how much you could save each year with more efficient appliances? Check out the ENERGY STAR website at www.energystar.gov, which highlights products that exceed the federal minimum standards for efficiency.

To support CFEC's energy efficiency efforts, Seminole Electric Cooperative, our wholesale power provider, has produced and shared several energy efficiency and conservation videos to help you save money through energy efficiency. Visit www.seminole-electric.com to view these videos.

For more information on energy efficiency and conservation, please view the information on our website www.cfec.com or call **800-227-1302** or **352-493-2511** to speak to a member services representative today.



Central Florida Electric
Cooperative, Inc.

~ YOUR POWER PARTNER ~

Our mission is to be the finest example of an electric cooperative where excellent service, competitive rates and concern for the consumer, community and environment guide our every action.

Holiday Events In The CFEC Area

ONGOING THROUGH DECEMBER:

Christmas Express Kirby Family Farm

Farm is transformed into a Christmas wonderland, an unforgettable holiday attraction the whole family can enjoy. There are lots of activities to see and do including the featured train ride through thousands of Christmas lights pulled by an old-fashioned, full size 1800s locomotive, one of only three just like her still in operation in the world. For more information, visit www.kirbyfarm.com.



DECEMBER 2

Dixie County Historical Society Christmas Open House

Everyone is invited to the Annual Christmas Open House of the Dixie County Historical Society, 823 S.E. Highway 349, in Old Town. Beginning at 6 p.m., this open house will feature the Big Cypress Bluegrass Band to perform. The Dixie County Historical

Society invites all visitors to enjoy the displays, music and light refreshments for the evening. The group will be open early, so please come and visit the varied displays. The society also extends an invitation to all to join the Dixie County Historical Society and to help preserve the history and memories of Dixie County.

Fanning Springs Festival of Lights

– The Festival of Lights Christmas Boat Parade and Duck Race will be held at the Fort Fanning Park on the Suwannee River, from 10am to 7pm. Activities include Rubber Duck Race and Santa Clause, as well as rock climbing wall, various children's activities, Car/Truck and Bike Show, Craft & Food Vendors. Live music all day, featuring: Steel Bridge, Jamie Davis, Saltwater Cowboys.

Williston's 17th Annual Christmas Parade

– The Williston Chamber of Commerce is sponsoring the 17th Annual Williston Christmas Parade. The parade will be on Sat., Dec. 2, 2017 at 6 pm and will be the official start of the "2017 Light up Williston

Festivities." This year's parade theme is "The Songs of Christmas."



DECEMBER 9

A Cedar Key Christmas – A Taste of Cedar Key will begin at 11:30 am to 1:30 pm in the Cedar Key city park. At dark, see the Cedar Key Christmas boat parade, with Santa Clam arriving by airboat.

Chiefland Christmas Festival

– Go on a visit to North Florida's North Pole at the Chiefland Christmas Festival, with a special appearance from Santa, Mrs. Claus and Santa's elves. Held at Train Depot Park, the festival will offer plenty of opportunities for holiday shopping. There will be activities for all ages including a petting zoo, a bounce house, bungee jumping, a rock climbing wall, first responder demonstrations and water walkers. The fun lasts well into the evening with the Lighted Parade kicking off at 6 pm.



Two Ways To Earn Money From CFEC!

Sign up for paperless billing and earn a 50-cent credit on your bill each month.

Enroll in the auto-bank draft option and receive a \$1 credit on each bill.

Call a Customer Service Representative now at **800-227-1302** or **352-493-2511** to sign up for paperless billing and auto-bank draft to start earning your reward today!

Payment Options:

In Office / Drive-Through – Payments can be made at any CFEC location during working hours. Payments can also be placed in the drop-box at each location after hours.

By Mail – Please allow sufficient time for delivery or payment may be received as late. Mail payments to: Central Florida Electric Cooperative, Inc., P.O. Box 9, Chiefland, FL 32644.

Phone / Online – Payments can be processed through our third-party provider, Point & Pay. A \$3.50 (per \$500) service fee will be charged by Point & Pay and is NOT a CFEC charge.

Payments made through Point & Pay are posted to the member's account at the time of payment. Pay By Phone at 1-844-463-8918 or Pay Online at www.cfec.com.

Bank Locations – Payments can be made at any Drummond Community Bank location or at the Lafayette State Bank in Bell, Fla., during their normal working hours. Returned checks or payment arrangements cannot be processed by these banks.

Bank Draft – Payments can be made automatically by bank draft by filling out a simple form and mailing or dropping it off at any CFEC office.



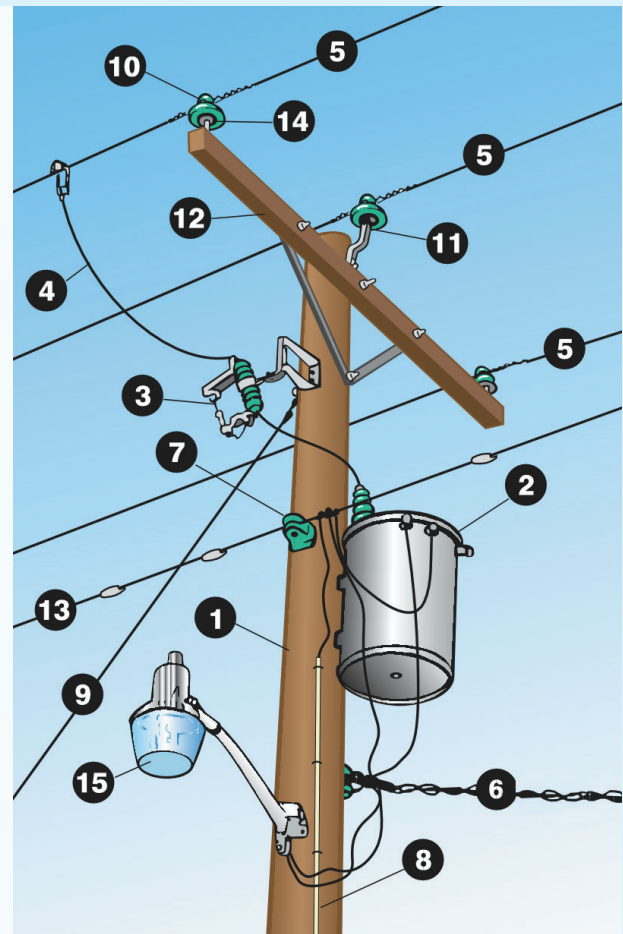
Power Lines 101: What are all those attachments on an electric pole?

What do you see when you look at a power line? What are all those attachments, and why are they important? Taking a closer look at utility lines proves that there is more than meets the eye.

There are two common kinds of electric lines that both use poles. The first is high-voltage transmission lines, which are typically attached to steel towers extending hundreds of feet off the ground. The voltage on these lines is extremely high – in the hundreds of thousands of volts. These are the types of lines operated by Central Florida Electric Cooperative's wholesale power provider, Seminole Electric Cooperative (Seminole), which generates electricity and transmits it through Florida's transmission grid to meet CFEC's power needs. Once the electricity arrives at one of the substations, CFEC's power lines carry the electricity to homes or businesses.

CFEC's distribution lines are part of a system of poles, wires, transformers and other equipment used to deliver electricity. Below is a description of the main components of an electrical distribution system.

- 1. Utility pole:** The half-ton wooden pole is the backbone of the electrical line. It is partially buried to support all of the equipment. It usually is about 40 feet in length and typically comes from logs made of cedar, pine, or fir trees – although some poles are steel or concrete.
- 2. Transformer:** The cylindrical metal device reduces electricity voltage to a level safe for delivery to Central Florida Electric Cooperative members' homes and businesses, at either 120 or 240 volts. That's a huge drop from 230 kilovolts (kV) at which Seminole transmits the power from its generating stations.
- 3. Fused cutout:** This provides overload protection. If there is a sudden surge on the line or demand gets to be too great, you might hear a loud blast. This is the fused cutout acting properly. CFEC's linemen then work to track down the problem, correct the issue and get the power back on after resetting the fuse.
- 4. Wire and clamp:** This wire is secured by a clamp and connects the main line to the transformer.
- 5. Primary conductor:** This is the main series of wires that carries electricity from the supplier to the member through the distribution system. A three-phase line – typically used to serve large power users, such as commercial and industrial accounts – has three separate current-carrying conductors. A single-phase line, which serves most homes, has just one current-carrying conductor.
- 6. Secondary tap (hot and neutral):** This conductor carries electricity between the transformer and the consumer's electric meter.
- 7. Strain insulators:** These ceramic objects hold the conductors in place and insulate them from the pole.
- 8. Pole ground wire:** This wire is connected to a metal rod driven about eight feet into the ground. Its job is to ground the system, which increases the level of safety for our members.
- 9. Guy wire:** This stranded wire helps stabilize the pole. Hardware connects it to the pole and an anchor in the ground.
- 10. Insulators:** These porcelain or rubber objects support the electric wires and prevent an undesired flow of electricity.
- 11. Pole-top pins:** These support the insulators on the pole.
- 12. Crossarm and braces:** This is the horizontal piece on the pole that makes the structure look like a cross. It holds the insulators and keeps the lines on a three-phase line from touching one another. It usually is made of the same wood as the pole.
- 13. Main line neutral conductor:** This wire is the neutral conductor in a distribution circuit.
- 14. Insulator pins:** These support the insulators on the crossarm.
- 15. Outdoor light:** Although not on all power poles, a dusk-to-dawn light is visible on many power poles.



*Safety is a high priority at CFEC, and our linemen complete many hours of education and safety training before working on distribution lines. Remember – if you see a fallen or damaged utility pole, stay a safe distance away and call CFEC immediately at **352-493-2511**.*

Attention High School Juniors!



Central Florida Electric Cooperative is accepting applications for the 2018 Electric Cooperative Youth Tour. Six high school junior from the service area will be selected. To apply, the student's residence must be served by Central Florida Electric Cooperative.

The tour begins with a two-day expenses-paid trip to Tallahassee to see the state Capitol and learn more about how our state government works. From this group, three students will be chosen to attend the Washington D.C. Youth Tour trip.

The Tallahassee Youth Tour is scheduled for Feb. 7-8, 2018, and the Washington Youth Tour will be June 9-14, 2018.

Ask your guidance counselor for details and applications, or visit our website at www.cfec.com. For more information, contact a Member Services Representative at **352-493-2511**.

APPLICATIONS ARE DUE DEC. 6, 2017.

In Memoriam: Clyde Townsend

Former CFEC Director for District 9, Clyde Townsend, passed away in late September at the age of 90. Townsend was first elected to the CFEC Board of Trustees in October 1980 and served until his retirement in 2008.

The amount of growth on CFEC's system during Townsend's tenure was tremendous, but he always kept members in mind and worked to help keep rates down.

Donnie Lane, Trustee from District 5, said of Townsend at his retirement, "He had a quiet wisdom and always used common sense and good judgment in keeping the best interests of the cooperative in mind."

Townsend was a lifelong resident of Bell and graduated from Bell High School in 1944.

Sincere condolences are offered to his family and friends.



At his last meeting, Clyde Townsend was presented with a gift as a token of appreciation for his 28 years of service to CFEC's members.



Chocolate-Dipped Meringue Sandwich Cookies

Ingredients

- 4 large egg whites
- 1 cup confectioners' sugar
- 1/2 cup almond flour
- 2/3 cup sugar

Ganache:

- 6 ounces semisweet chocolate, chopped
- 3 ounces unsweetened chocolate, chopped
- 1-1/4 cups heavy whipping cream
- 1 tablespoon light corn syrup

TOPPINGS:

- 1/2 cup chocolate sprinkles
- 1/2 cup sliced almonds, finely chopped and toasted
- 1/2 cup sweetened shredded coconut, finely chopped and toasted

DIRECTIONS

1. Place egg whites in a large bowl; let stand at room temperature 30 minutes.
2. Preheat oven to 225°. In a small bowl, whisk confectioners' sugar and almond flour until blended. Beat egg whites on medium speed until foamy. Gradually add 2/3 cup sugar, 1 tablespoon at a time, beating on high after each addition until sugar is dissolved. Continue beating until stiff glossy peaks form. Fold in confectioners' sugar mixture.
3. Cut a small hole in the tip of a pastry bag or in a corner of a food-safe plastic bag; insert #805 round pastry tip. Fill

bag with meringue. Pipe 1-in. diameter cookies 1 in. apart onto parchment paper-lined baking sheets. Using a finger moistened with water, smooth tops of cookies.

4. Bake 40-45 minutes or until firm to the touch. Turn oven off (do not open oven door); leave cookies in oven for 1 hour. Remove from oven; cool completely on baking sheets.
5. For ganache, place semisweet and unsweetened chocolates in a small bowl. In a small saucepan, combine cream and corn syrup; bring just to a boil. Pour over chocolate; stir with a whisk until smooth. Remove 1 cup ganache to another bowl; refrigerate 25-30 minutes or until mixture is thick enough to pipe, stirring occasionally. Reserve remaining ganache for dipping; let stand, covered, at room temperature, stirring occasionally.
6. Cut a small hole in the tip of a pastry bag or in a corner of a food-safe plastic bag; insert #802 round pastry tip. Fill bag with chilled ganache. Pipe onto bottoms of half of the cookies; cover with remaining cookies. (Ganache may soften as it warms. If necessary, return ganache to refrigerator until firm enough to pipe.)
7. Place toppings in separate shallow bowls. Dip each sandwich cookie halfway in room temperature ganache; allow excess to drip off. If necessary, warm ganache in microwave for 10 seconds to thin slightly. Dip in toppings as desired; place on waxed paper and let stand until set. Store in airtight containers at room temperature. Yield: 7 dozen.



Lime Christmas Tea Cookies

INGREDIENTS

- 1 cup butter, softened
- 1/2 cup sugar
- 2 teaspoons grated lime peel
- 1/4 cup lime juice
- 1 teaspoon vanilla extract
- 2-3/4 cups all-purpose flour
- 10 to 12 drops green food coloring
- 3/4 cup finely chopped pistachios



Icing:

- 3-3/4 to 4 cups confectioners' sugar
- 5 to 6 tablespoons warm water
- 3 tablespoons meringue powder
- Green food coloring, optional

DIRECTIONS

1. In a large bowl, cream butter and sugar until light and fluffy. Beat in the lime peel, lime juice and vanilla. Gradually add flour and mix well. Beat in food coloring. Stir in pistachios. Cover and refrigerate for 4 hours or until easy to handle.
2. On a lightly floured surface, roll out dough to 1/4-in. thickness. Cut with a floured 2-1/2-in. tree-shaped cookie cutter. Place 1 in. apart on ungreased baking sheets. Bake at 350° for 8-10 minutes or until set. Cool for 5 minutes before removing from pans to wire racks to cool completely.
3. In a large bowl, combine confectioners' sugar, water and meringue powder; beat on low speed just until blended. Beat on high 4-5 minutes or until stiff peaks form. Divide in half; if desired, tint one portion green. Keep unused icing covered at all times with a damp cloth. If necessary, beat again on high speed to restore texture.
4. Frost and decorate cookies as desired. Let stand at room temperature several hours or until frosting is dry and firm. Store in an airtight container. Yield: about 4 dozen.

Source: Taste of Home's Holiday & Celebrations Cookbook

Member Benefits:

■ COOPERATIVE SOLAR

Get the power you need from the sun by purchasing solar power.

■ PAY-AS-YOU-GO

Eliminate late fees by making prepayments to your electric account.

■ EDUCATIONAL ROUND UP

Support area youth by asking for your bill to be "rounded up" to the nearest dollar.

■ RESIDENTIAL ENERGY AUDITS

Schedule a home energy audit with a Member Services Representative.

■ CFEC CONNECT MOBILE APP

Use your smart phone device to view or pay your bill or to report an outage.

■ SURGE PROTECTION PROGRAM

Add protection for your home with this meter-based surge suppression program.

■ BANK DRAFT

Authorize the automatic payment of your monthly electric bill.

To learn more about these Member Benefits, call **352-493-2511** or **1-800-227-1302** and speak to a Customer Service Representative.



Central Florida Electric Cooperative, Inc.

~ YOUR POWER PARTNER ~

NOTICE:

The Board of Trustees for Central Florida Electric Cooperative, Inc., meets on the third Monday of each month at 5 p.m. at the Cooperative's main office in Chiefland. Members are always welcome to attend.

Storm Season is HERE!



CFEC's Automated Outage Response System uses member telephone numbers to locate accounts and corresponding locations. That's why it is important to update phone numbers associated with your service location. Inaccurate phone number/ service location combinations may result in delayed handling of the outage.



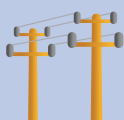
Update your phone number by calling **1-800-227-1302** or **352-493-2511**

To Report A Power Outage:

- Call: **1-800-227-1302** or **352-493-2511**, follow the prompts of the **Automated Outage Response System**
- Use the **CFEC Connect App**: Click on "report outage." Fill in the form and click "submit." If you are already logged in to the app, simply click the "report outage" triangle, and "yes" to report the outage.
- Online: Log on to **www.cfec.com**, click on "outage information" and fill in the form with the required information. Hit "send" when complete.



Safety Tip: Make sure there is sufficient space around all electrical equipment for safe operation and airflow.



CFEC Reminder: Do not place signs, flags or any other items on power poles. It may hinder future power restoration efforts.





Central Florida Electric Cooperative, Inc.

~ YOUR POWER PARTNER ~

CENTRAL FLORIDA ELECTRIC COOPERATIVE, INC.

MAIN OFFICE

11491 NW 50th Ave.
Chiefland, FL 32626-3247
352-493-2511 or 800-227-1302
www.cfec.com

MAIL ADDRESS

P.O. Box 9
Chiefland, FL 32644-0009

CROSS CITY OFFICE

207 NE 210 Ave.
Cross City, FL 32628
352-498-7322

INGLIS OFFICE

167 Highway 40 West
Inglis, FL 34449
352-447-3553

ADDITIONAL PAYMENT LOCATIONS

Drummond Community Bank
Lafayette State Bank (Bell only)

For a complete listing of payment
locations, go to www.cfec.com.

*This institution is an equal opportunity
provider and employer.*

PRSRT STD
U.S. POSTAGE
PAID
ORLANDO, FL
PERMIT NO. 3937

CFEC Holiday Closing Schedule:

Christmas – Friday, Dec. 22 and Monday, Dec. 25

New Year's – Monday, Jan. 1

In This Issue:

Try These Energy Conservation Tips	2
Holiday Events in the CFEC Service Area	3
In Memoriam: Clyde Townsend	5
Youth Tour Applications Are Due Soon	5
Spruce Up Your Holiday Baking With These Sweet Treats	6

